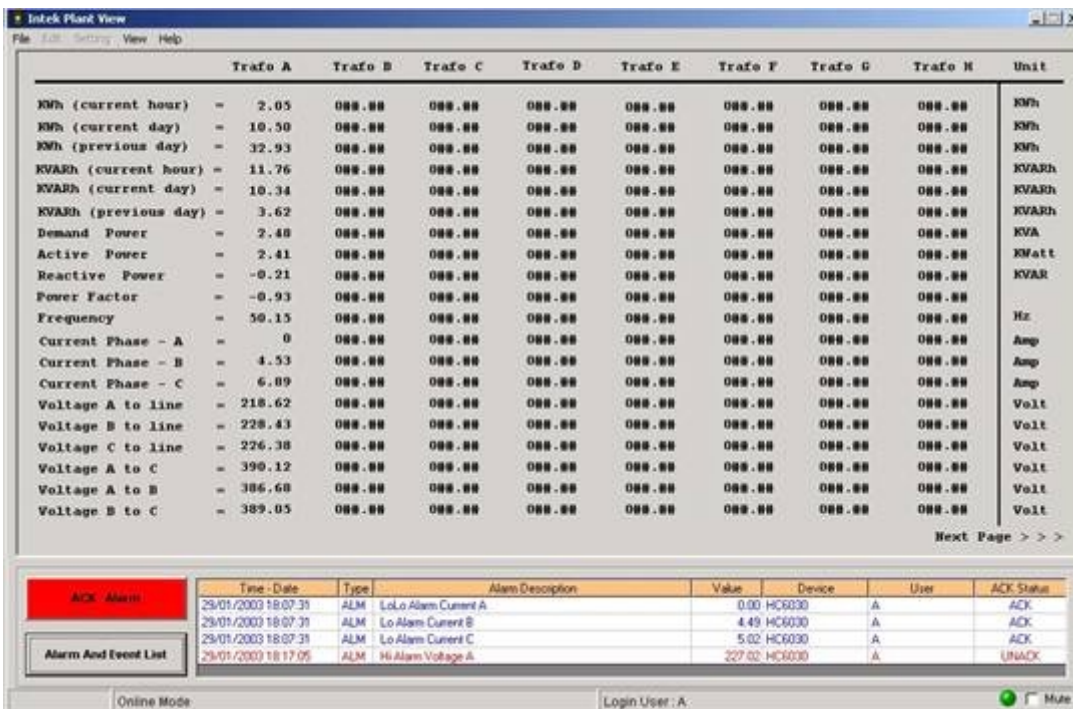


MMI GUI (Graphical User Interface) which allow multi-graphicals presentation/display of real-time OPC data retrieved directly from InTek Hybrid Multi OPC Server.

Include graphic editor with electrical symbol libraries such as Trafo, CB, Switch, etc. for either Static or Dynamic (color or symbol change on different status).

Integrate with Alarm Window to allow real-time monitoring of any alarm (limit-point exceed/violation, event for Command Open/Close, etc).



Select and define any analog parameters limit set point (Hi, HiHi, Lo, and LoLo) and any discrete/digital change. Browse the selected tag(s) directly from the tags available on any OPC server.

Alarm definition could be performed as common device alarm (that automatically be applied to all typical device), individual tag/point alarm, or could be automatically gathered from OPC Server (should alarm definition available on).

Alert the operator or any responsible person on the limit point violation or status change via visual screen, audible/sound, paging, SMS to GSM mobile phone, e-mail, or just log to any external ODBC database or flat file.

Alarm & Event List

From: 28-01-2003 6:00:00 To: 28-01-2003 5:35:35 Refresh Alarm Event Both Close

Start Time	End Time	Alarm Status	Type	Alarm Description	Value	Device	Alarm User	ACK Status	ACK User	ACK Time
28/01/2003 17:34:18		Active	ALM	LoLo Current B	0.00	HC6030	A	UNACK		
28/01/2003 17:34:18		Active	ALM	LoLo Voltage A	0.00	HC6030	A	UNACK		
28/01/2003 17:34:18		Active	ALM	LoLo Current A	0.00	HC6030	A	UNACK		
28/01/2003 17:34:18		Active	ALM	LoLo Voltage C	0.00	HC6030	A	UNACK		
28/01/2003 17:34:18		Active	ALM	LoLo Voltage B	0.00	HC6030	A	UNACK		
28/01/2003 17:34:18		Active	ALM	LoLo Current C	0.00	HC6030	A	UNACK		
28/01/2003 17:26:16	28/01/2003 17:29:29	InActive	ALM	LoLo Current C	0.00	HC6030	A	UNACK		
28/01/2003 17:26:16	28/01/2003 17:29:29	InActive	ALM	LoLo Current B	0.00	HC6030	A	UNACK		
28/01/2003 17:26:16	28/01/2003 17:29:29	InActive	ALM	LoLo Voltage A	0.00	HC6030	A	UNACK		
28/01/2003 17:26:16	28/01/2003 17:29:29	InActive	ALM	LoLo Current A	0.00	HC6030	A	UNACK		
28/01/2003 17:26:16	28/01/2003 17:29:29	InActive	ALM	LoLo Voltage C	0.00	HC6030	A	UNACK		
28/01/2003 17:26:16	28/01/2003 17:29:29	InActive	ALM	LoLo Voltage B	0.00	HC6030	A	UNACK		
28/01/2003 17:24:31	28/01/2003 17:24:44	InActive	ALM	LoLo Current A	0.00	HC6030	A	ACK	A	28/01/2003 17:24:39
28/01/2003 17:24:31	28/01/2003 17:24:44	InActive	ALM	LoLo Voltage C	0.00	HC6030	A	ACK	A	28/01/2003 17:24:39
28/01/2003 17:24:31	28/01/2003 17:24:44	InActive	ALM	LoLo Current C	0.00	HC6030	A	ACK	A	28/01/2003 17:24:39
28/01/2003 17:24:31	28/01/2003 17:24:44	InActive	ALM	LoLo Current B	0.00	HC6030	A	ACK	A	28/01/2003 17:24:39
28/01/2003 17:24:31	28/01/2003 17:24:44	InActive	ALM	LoLo Voltage B	0.00	HC6030	A	ACK	A	28/01/2003 17:24:39
28/01/2003 17:24:31	28/01/2003 17:24:44	InActive	ALM	LoLo Voltage A	0.00	HC6030	A	ACK	A	28/01/2003 17:24:39
28/01/2003 17:23:01	28/01/2003 17:24:17	InActive	ALM	LoLo Voltage C	0.00	HC6030	A	UNACK		
28/01/2003 17:23:01	28/01/2003 17:24:17	InActive	ALM							
28/01/2003 17:23:01	28/01/2003 17:24:17	InActive	ALM							
28/01/2003 17:23:01	28/01/2003 17:24:17	InActive	ALM							
28/01/2003 17:23:01	28/01/2003 17:24:17	InActive	ALM							

Alarms/Events will be monitored on real-time base, and be displayed on Alarm/Event window.

The current alarm list will be on dedicated window, and it will be shown both ACK and unACK Alarms.

Alarm Properties

OPC Server Name: InTek.OPCServer

List Device

- 00ServerStatus
- ACKStatus9
- Device11
- Device9
- HC6030

Tagname

Name: HC6030.AmpA

Device: HC6030

Add Update Remove Clear

List Tag

- NO1Val
- NO1Prnt
- NO1OutType
- ReqInb1
- ReqInr1
- ReqInTot
- ReqC
- ReqF
- ReqKey
- ReqL
- AllTemptScaleRange

Discrete Tag

Priority

Description

Analog Tag

Hi Hi: 20.5 E

Hi: 18 D

Lo: 0.5 P

Lo Lo: 0

Description: Current

Type	OPC Server	Device	Tagname	Value
A	InTek.OPCServer	HC6030	HC6030.VoltEM	HiHi=230, Hi=
A	InTek.OPCServer	HC6030	HC6030.VoltCM	HiHi=230, Hi=
A	InTek.OPCServer	HC6030	HC6030.AmpA	HiHi=5475, Hi=
A	InTek.OPCServer	HC6030	HC6030.VoltAM	HiHi=230, Hi=
A	InTek.OPCServer	HC6030	HC6030.AmpB	HiHi=230, Hi=
A	InTek.OPCServer	HC6030	HC6030.AmpC	HiHi=230, Hi=

Handphone Number List

Example: +62811888999

HP Number: +62816881199

Priority: 3

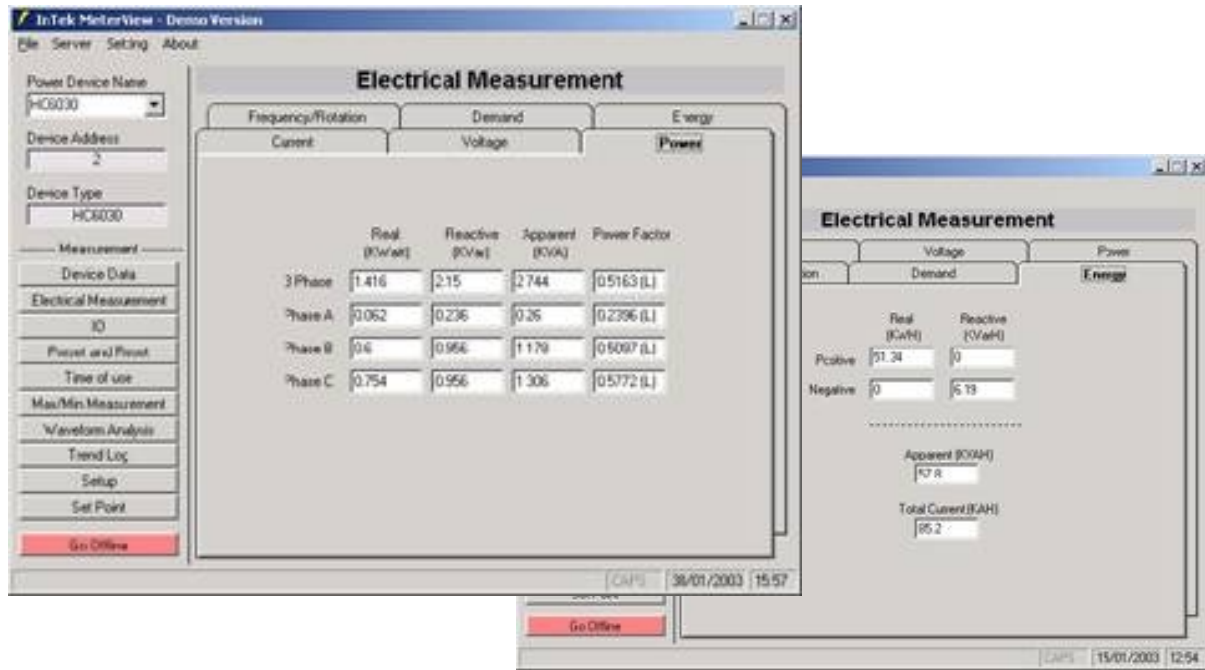
Hp Number	Priority
+628162514591	3
+62816881199	3
+628168812345	6

Add Del Edit Clear

COM Port: COM1

Service Centre: +6281615

Set COM and Service Centre



Access all detail data on the Power Meter without the need to use the specific Manufacturer software, including real-time data of all available measured and calculated electrical parameters, periodic data-log within memory meter, max-min recorded value, wave-form oscilloscope snapshot, and other parameters allowed by the Meter's manufacturer to be accessed from the supported protocol.

Meter setup/configuration could also be performed, such as set CT/PT Ratio, set the real-time clock, date-set, etc.

