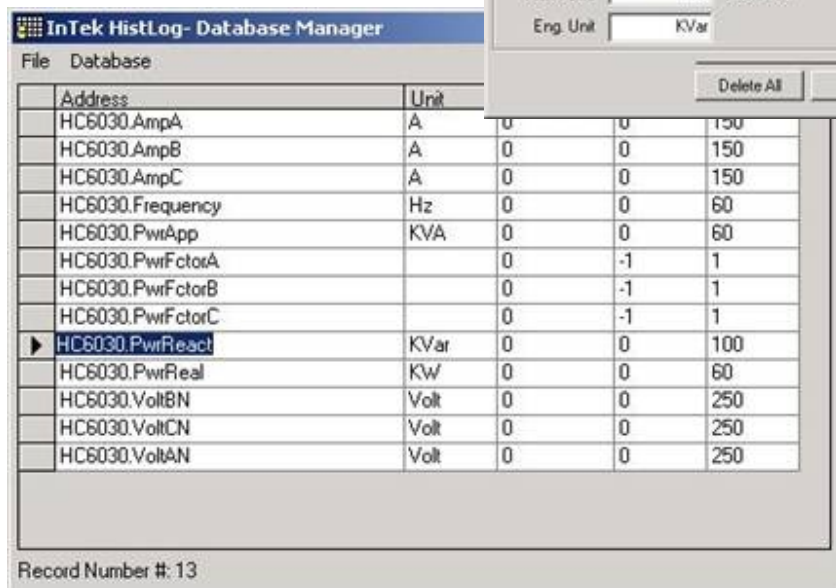
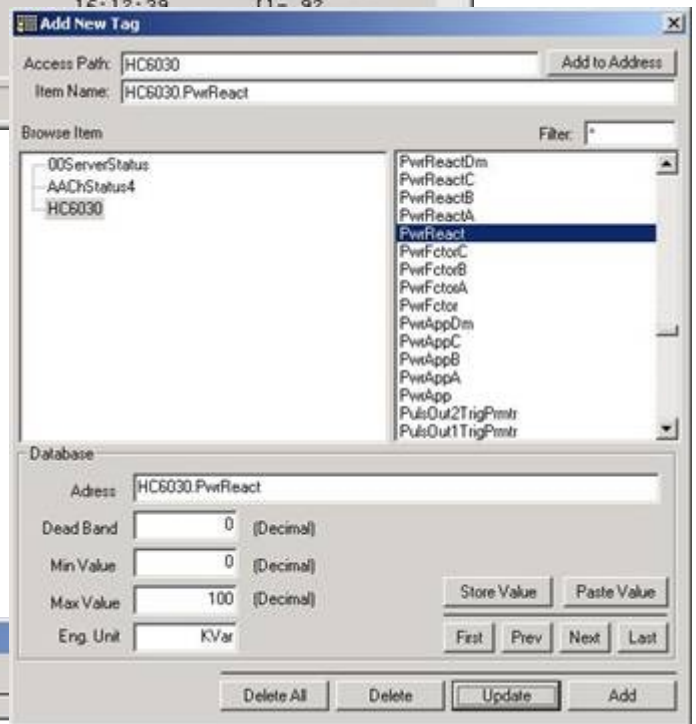


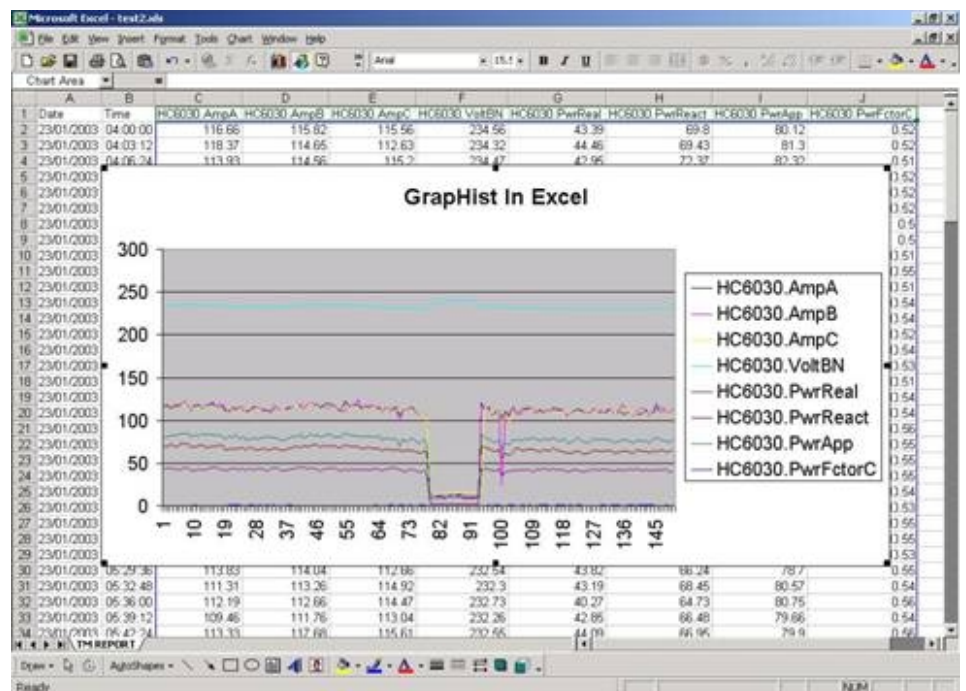
Store the real-time OPC data to standard mySQL database or any ODBC-compliance database requested by the customer.

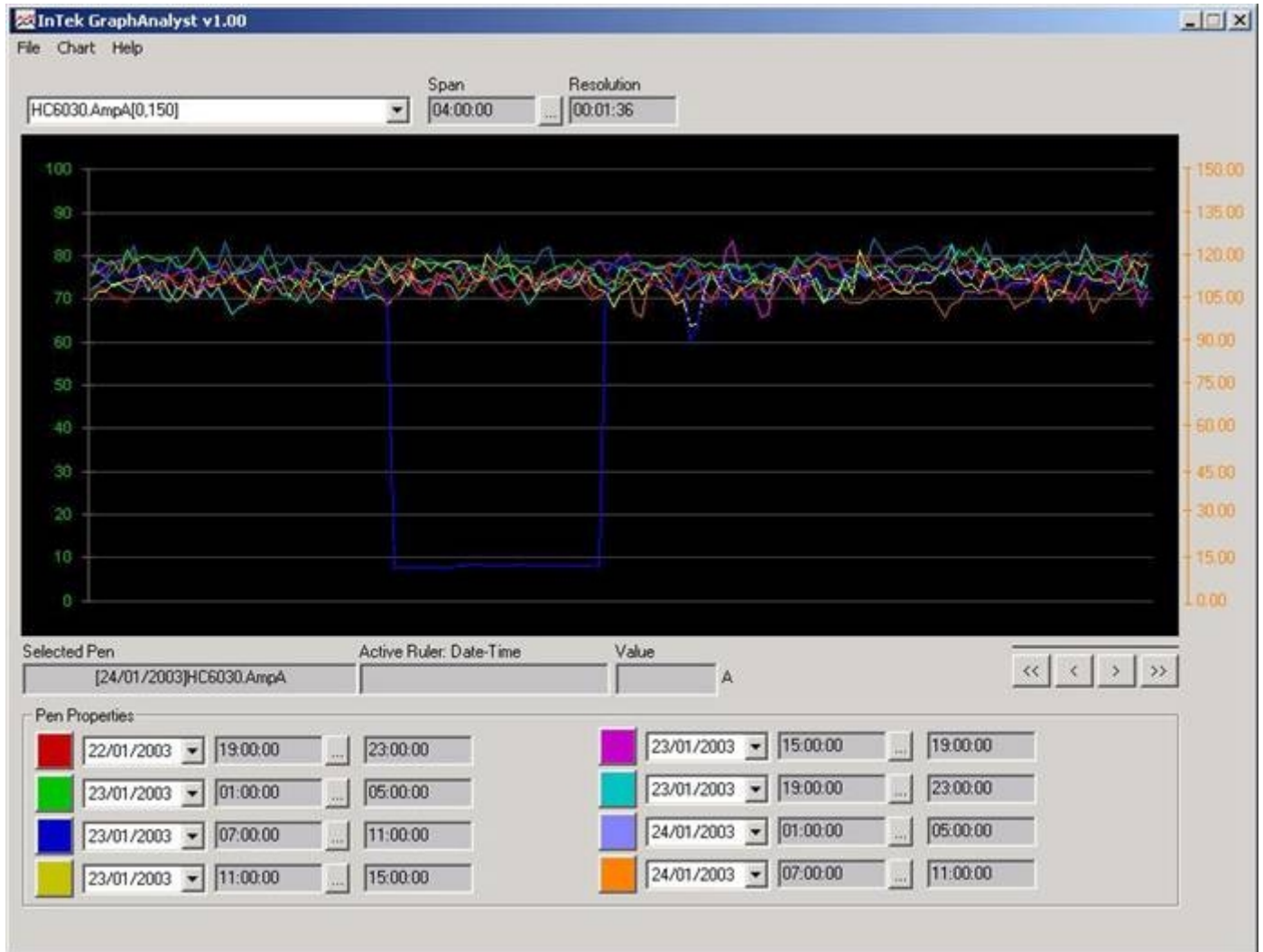
Free selection of the recorded tags/parameters with free selection on snapshot/storage sampling resolution as well as valid storage period.





- View the historical data up to the last minute in a graphical line curve
- Free selection of start date/time, end date/time, and grid resolution
- Up to eight (8) parameters/pens in one graphical trend display with easy pen to parameter connection
- Export the selected/presented graphical data directly to Excel spread-sheet, and re-build the same graphical view within Excel Chart
- Unlimited view profile that store the parameters/ pens definition and grid resolution
- 'Browse and Select', no manual input for Tags/ Parameters selection.





Compare an electrical parameter trend between different periods.

Free selection of time period compare between different hour/shift on the same day, compare between day(s), compare between week(s), or even compare between month(s) for up to eight different time period.

Analyze the compared trend and find-out the electrical figure as per the selected parameter, and anticipate if there is any period(s) presents unusual fluctuation(s).

Export the selected/presented graphical data directly to Excel spread-sheet, and re-build the same graphical view within Excel Chart.

Unlimited view profile that store the parameters/ pens definition and grid resolution

'Browse and Select', no manual input for Tags/ Parameters selection.

Get the SPC (Statistical Process Control) value - average, minimum, maximum, etc. - from any log parameter data, and present it automatically on MS Excel spreadsheet. The automatic periodic report could be triggered based-on hourly, daily, weekly, monthly, and for the whole total year.

File report could also be automatically copied to specified directory or be sent to specified e-mail account via Intranet/Internet e-mail server as a daily morning report.

Time	LVA	LVA/B-C	LVA 3-phase (avg)			LVA 3-phase (max)			LVA 3-phase (min)			Freq (Hz)	Power Factor A			Power Factor B			Power Factor C			
			Avg	Max	Min	Avg	Max	Min	Avg	Max	Min		Avg	Max	Min	Avg	Max	Min	Avg	Max	Min	
0:00 - 0:59	42	69.62	0	41.988	70.79	33.39	80.58	81.96	65.08	69.817	86.35	55.94	50.079	0.5229	0.64	0.47	0.5302	0.63	0.46	0.5271	0.57	0.49
1:00 - 1:59	43.02	69.65	0	43.028	48.11	36.77	81.973	89.02	73.72	88.884	74.96	62.47	49.991	0.5326	0.57	0.5	0.5276	0.57	0.49	0.5304	0.59	0.49
2:00 - 2:59	42.78	67.47	0	42.854	49.05	38.24	80.14	87.46	74.09	87.595	72.31	62.53	50.06	0.5381	0.59	0.5	0.5395	0.57	0.5	0.5347	0.57	0.5
3:00 - 3:59	43.26	69.22	0	42.91	47.34	39.11	81.511	86.8	75.5	89.143	73.59	64.3	50.07	0.5298	0.56	0.5	0.5239	0.56	0.5	0.5254	0.62	0.47
4:00 - 4:59	43.2	69.80	0	43.244	50.52	39.38	82.279	89.64	74.99	89.868	74.75	63.12	49.964	0.529	0.56	0.49	0.5268	0.57	0.5	0.5281	0.57	0.49
5:00 - 5:59	42.72	66.29	0	42.783	47.6	35.17	79.12	86.63	70.19	86.39	61.79	59.54	50.094	0.5428	0.63	0.5	0.5268	0.64	0.5	0.5428	0.63	0.49
6:00 - 6:59	43.44	69.89	0	43.42	49.67	39.75	82.443	89.55	77.7	89.147	74.19	65.64	50.029	0.5272	0.56	0.5	0.5222	0.56	0.49	0.5209	0.56	0.5
7:00 - 7:59	42.42	66.32	0	42.258	48.23	38.76	78.549	84.72	69.07	86.022	71.16	56.26	49.99	0.5494	0.59	0.51	0.5345	0.57	0.5	0.5422	0.58	0.51
8:00 - 8:59	3.96	21.01	0	8.1255	103.01	2.14	93.811	295.77	8.39	17.404	230.94	7.93	49.981	0.142	0.72	0.67	0.4991	0.74	0.39	0.2943	0.72	0.24
9:00 - 9:59	41.64	64.41	0	41.517	48.02	3.5	76.58	85.04	86.48	84.276	70	61.91	50.024	0.5432	0.59	0.49	0.5386	0.58	0.49	0.5461	0.6	0.5
10:00 - 10:59	41.88	64.07	0	41.888	46.81	37.76	76.652	83.72	71.58	84.856	88.86	59.77	49.942	0.5485	0.59	0.52	0.5442	0.58	0.52	0.5494	0.6	0.52
11:00 - 11:59	41.58	62.57	0	41.622	47.11	38.06	76.895	82.44	70.79	83.621	88.59	59.66	49.962	0.5476	0.59	0.51	0.5429	0.58	0.51	0.5477	0.59	0.51
12:00 - 12:59	42.12	67.44	0	42.048	48.71	37.93	79.513	89.34	69.86	87.325	75.07	58.4	49.991	0.5299	0.59	0.49	0.5264	0.57	0.49	0.5208	0.58	0.49
13:00 - 13:59	49.99	62.91	0	49.925	47.45	31.61	75.095	83.35	63.59	82.826	89.37	54.31	49.925	0.5458	0.59	0.49	0.5423	0.59	0.5	0.5473	0.6	0.49
14:00 - 14:59	41.69	65.31	0	41.908	47.34	38.56	77.244	86.97	70.67	85.291	73.96	59.75	49.991	0.5436	0.59	0.5	0.5368	0.58	0.5	0.5402	0.59	0.5
15:00 - 15:59	42.12	67.23	0	42.088	48.83	38.08	79.291	87.72	73.49	87.34	72.77	62.41	49.922	0.5327	0.57	0.5	0.5308	0.57	0.5	0.531	0.58	0.5
16:00 - 16:59	42.12	65.28	0	42.127	47.32	38.33	77.904	86.12	71.95	85.271	72.64	59.57	50.01	0.5432	0.59	0.5	0.5389	0.57	0.5	0.5438	0.58	0.5
17:00 - 17:59	41.02	68.08	0	41.664	51.54	37.4	79.718	80.56	67.48	87.822	74	64.84	50.041	0.5238	0.57	0.46	0.5219	0.63	0.49	0.5254	0.62	0.47
18:00 - 18:59	41.62	65.12	0	41.606	48.13	38.23	78.009	88.69	71.21	85.598	74.39	59.42	50.017	0.5398	0.59	0.5	0.5347	0.59	0.49	0.5269	0.59	0.5
19:00 - 19:59	41.52	69.95	0	41.65	43.9	37.21	74.028	84.36	67.44	81.991	67.78	56.95	49.987	0.5653	0.6	0.54	0.5981	0.59	0.53	0.5638	0.6	0.53
20:00 - 20:59	41.76	63.51	0	41.752	47.34	37.81	76.92	82.29	70.46	83.5	89.82	59.75	50.044	0.5507	0.59	0.52	0.546	0.58	0.51	0.5494	0.59	0.52

Time	Current A			Current B			Current C			Volt A-N			Volt B-N			Volt C-N			Spike Counter			
	Avg	Max	Min	Avg	Max	Min	Avg	Max	Min	Avg	Max	Min	Avg	Max	Min	Avg	Max	Min	Ia	Ib	Ic	Van
7 0:00 - 0:59	114.1	135.2	91.97	114.5	136.6	91.12	113.3	134.6	91.79	236.5	237.5	233.7	234.9	235.9	231.8	235.6	236.6	233.9				
8 1:00 - 1:59	115.6	128	104.6	115.9	127.9	105.6	114.6	126.8	104.6	235.4	238	232.6	233.8	238.1	230.7	234.6	237.1	232				
9 2:00 - 2:59	114.1	123.7	105.3	114.8	125.8	106.2	113.1	121.6	104.8	235.1	236.4	233.4	233.4	234.6	231.7	234.2	235.5	232.3				
10 3:00 - 3:59	115.7	127.7	107	116.1	127.2	107.5	114.7	126.3	106	236.2	237.3	234.1	234.6	235.7	232.7	235.3	236.4	233.4				
11 4:00 - 4:59	116.6	129.6	105.8	117.2	130.5	105.2	115.7	128.9	105.7	236.1	238	233.4	234.5	236.4	232.6	235.2	237	233.6				
12 5:00 - 5:59	113.3	123.5	99.36	113.2	123.9	100.2	112	121.8	99.95	234.3	235.1	232.7	232.5	233.4	230.4	233.5	234.3	231.9				
13 6:00 - 6:59	117.3	126.6	110.3	116.6	125.5	109.1	115.9	124.6	109.6	236.6	238.9	234.4	234.8	237.6	232.6	235.6	237.8	233.6				
14 7:00 - 7:59	113	121.4	100.2	112.7	120.5	99.18	111.6	119.7	97.88	233.9	236.2	232.1	232.1	234.3	230.4	233	235.2	231.3				
15 8:00 - 8:59	26.42	121.2	10.98	26.24	120.7	10.76	28.94	120.8	13.87	239.3	242.3	230.6	237.5	240.4	228.9	238.6	241.7	229.8				
16 9:00 - 8:59	110.3	119.3	24.02	109.7	119.1	23.77	109.3	119.4	23.8	233.3	234.4	232.3	231.6	232.7	230.7	232.6	233.7	231.7				
17 10:00 - 10:59	110.9	119.1	103.1	110.6	119.4	103.4	109.9	118.2	103.2	232	233.1	230.9	230.2	231.5	229.1	231.3	232.5	230.1				
18 11:00 - 11:59	110	118.9	101.7	110.1	119.5	102.8	109.1	118.7	101.3	232.1	234.3	230.8	230.4	232.8	229.2	231.3	233.7	230.1				
19 12:00 - 12:59	113.5	126.6	101.4	113.5	126.6	102.3	112.5	125.5	101	234.9	238	230.6	233.2	236.3	228.7	234.2	237.4	229.6				
20 13:00 - 13:59	108.9	121.7	91.19	108.9	121.9	92.08	108	120.7	92	231.3	233.1	227.5	229.6	231.3	226.3	230.5	232.4	226.9				
21 14:00 - 14:59	111.7	122.6	103.1	111.9	121.7	103.3	110.8	121.1	102.4	233.3	237.8	230.4	231.6	236.3	228.8	232.5	236.9	229.8				
22 15:00 - 15:59	113.5	124.1	104.8	113.8	124.4	105.5	112.4	123	104.2	234.5	236.5	232.2	232.8	234.8	230.3	233.5	235.5	231.7				
23 16:00 - 16:59	111.7	122.2	102.8	111.8	121.8	103.3	110.7	121.2	102	233.7	236.8	229.8	232.1	235.3	228.1	232.9	236	228.6				
24 17:00 - 17:59	113.1	124.7	98.14	113.2	125.1	97.24	112.4	125	97.93	236.4	238.4	234.6	234.8	236.4	233.3	235.7	237.5	234.2				
25 18:00 - 18:59	111.9	121.7	102.9	112.4	122.4	103.6	111.1	121.2	101.7	233.3	236.7	231.1	231.9	235	229.3	232.6	235.9	229.9				
26 19:00 - 18:59	107.7	117.9	98.84	108.2	117.8	99.97	106.8	116.2	98.14	229.9	231.9	228.2	228.5	230.4	226.7	229.2	231.2	227.7				
27 20:00 - 20:59	109.8	120.7	101.9	110.1	121.2	101.9	108.9	120.1	101.5	232.3	234	231.1	230.8	232.5	229.3	231.6	233.2	230.3				
28 21:00 - 21:59	111.7	120.8	102.9	112.1	121.2	103	110.7	119.5	102.2	233.1	234.6	231.8	231.5	232.9	230.1	232.3	233.7	231.1				
29 22:00 - 22:59	115.4	127.2	106	115.8	128.3	106.6	114.5	126.3	106	236.1	238	234.4	234.6	236.5	232.7	235.3	237.1	233.6				
30 23:00 - 23:59	113.1	120.1	105.6	113.5	125.8	104.9	113.4	123.9	104.4	234.8	235.7	232.8	233.3	234.4	231.1	234	234.9	232.1				
31 Daily	106.6	127.2	10.98	106.7	128.3																	